

Survey of People with Lived Experience of Using Drugs in our Communities

Health Unit Region = County of Haliburton, City of Kawartha Lakes and Northumberland County, ON, Canada.



SECTION ONE

Who We Heard From

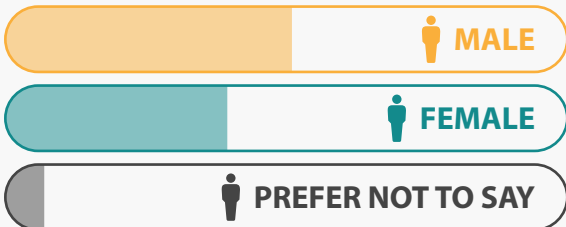
COUNTY

Northumberland County

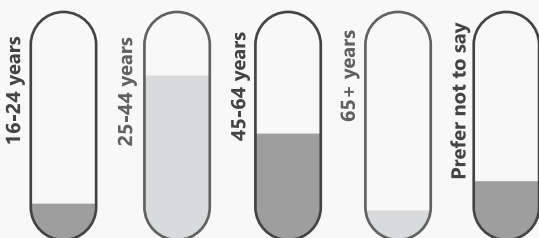


County of Haliburton and City of Kawartha Lakes

GENDER



AGE



SECTION TWO

Lived Experience (within the past six months)

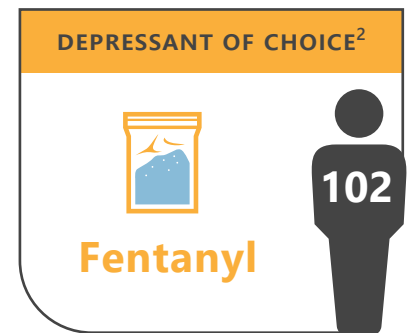
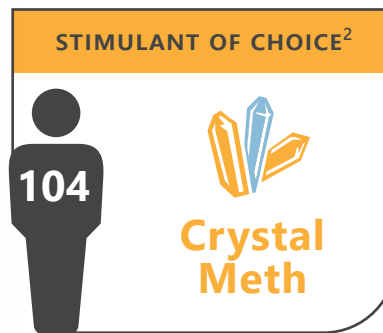
Most survey respondents said that they used **everyday** or **more than once a week**.¹

23 Once a week or less than once a week.

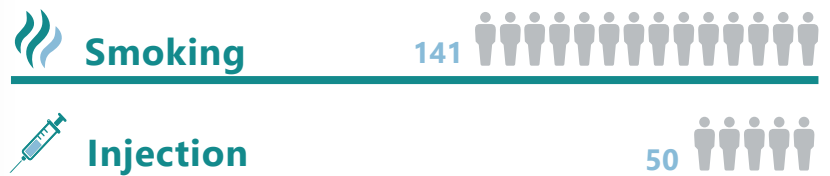
120 Daily or more than once a week.



¹Note: Sample size is 143.



MOST COMMON METHODS OF USE²



²The respondents might have chosen more than one substance or method of use and hence these are not mutually exclusive. Note: Sample size is 146. = 10 respondents



Among those who selected injection, **over two-thirds³** reported that they have **reused injection equipment** (at least occasionally) in the past six months.

³Note: Sample size is 50.

133 of survey respondents said that they **have used alone**, at least once, within the past six months.⁴



⁴Note: Sample size is 145.



SECTION THREE

What We Heard

Drug Poisoning and Overdose Prevention Strategies

Overall, we heard from survey respondents that drug poisoning and overdose prevention strategies are needed in our communities.

Local Needs Identified⁵

Survey respondents said that these strategies are needed:



Broader supports in the community

- 71% Having a safe and secure place to live
- 68% Opioid Agonist Treatment (OAT)
- 67% Community support groups
- 47% Healing circles



Harm reduction supports

- 82% Drug testing kits
- 71% Better access to harm reduction supplies and equipment
- 68% Peer-assisted consumption
- 58% Targeted naloxone distribution

⁵The respondents might have chosen more than one option and hence these are not mutually exclusive. Note: Sample size is 142.

Services of Interest⁶

If available, survey respondents said they would use these services:



- 81%⁷ Consumption and Treatment Site
- 70% Drug checking services
- 79%⁷ Safer supply program

⁶Note: Sample size is 142 unless otherwise specified.
⁷Sample size is 145.

DISCLAIMER

Survey was conducted from December 2023 to March 2024. Findings can only be interpreted within the survey context and cannot be generalized to the overall population of people with lived experience of drug use in the County of Haliburton, City of Kawartha Lakes, and/or Northumberland County.

Source: Haliburton, Kawartha, Pine Ridge District Health Unit. (2024). Summary of Findings: Survey of People with Lived and Living Experience about Drug Poisoning and Overdose Prevention Strategies in our Community. Port Hope, ON: Author.